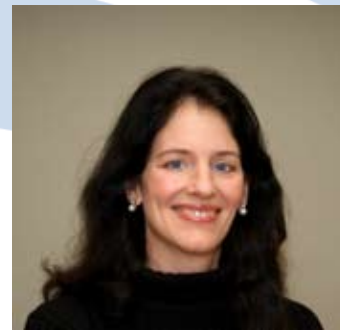


Teamwork

by Dione Lee

President - QSE Solutions



What makes a successful Safety Management System?

Teamwork. This simple concept is usually overlooked when implementing and maintaining safety management systems. It is overlooked when we create policies and procedures; it is overlooked when we develop job descriptions; it is overlooked when shoreside communicates to the vessels, and when the vessels communicate with shoreside; it is overlooked when we want to receive credit for a job well done; and, unfortunately it has been overlooked when we have to say an untimely goodbye to a fellow crewmember.

So, if teamwork is so simple, why is it overlooked? Do we run out of time to involve others; are our imaginations so great that we think we can visualize and write a procedure without involving those who perform the function; do we forget to get input from the people who are held accountable when assigning responsibility; do we only care about our efforts being recognized that we fail to recognize the contribution that others can make; and/or, do we think this one time we don't need anyone watching our backs as we perform a routine but somewhat hazardous task?



Starlight Marine ASD Tug, Z-Five

Safety management system elements have inherent communication processes that are all geared toward working as a team: management and master reviews; audits, defining levels of authority and lines of communication onboard and shoreside; and, non-conformity reporting for red-flagging when processes and systems break down or are no longer valid.

If you haven't adopted a team attitude already, try it. You might be amazed at how effortless and effective your safety management system will be.

QSE Solutions has partnered with individuals and organizations to implement customized quality, safety and environmental management and learning systems for 20 years. They have developed and fine tuned an integrated, innovative, and dynamic teamwork approach for bringing positive and sustainable change within organizational operating environments.